



SCHAEFER
Ventilation Equipment

Low & High Intensity Gas Infra-Red Heaters



*Save up to
75%
in energy
cost!*

**Total heating solutions for commercial, industrial,
agriculture, horticulture and recreational buildings.**



Schaefer High Intensity Gas Infra-Red Ceramic Heaters



2-Stage heaters available:

HLK-90/45, HLK-100/50

LK-120/80, HLK-150/100

HLK-160/80, HLK-200/100

Schaefer Infra-Red Heaters Reliable, energy saving, comfort heating with all the advantages.

Features:

- Factory prewired, prepiped and tested
- Operate on natural or propane gas
- Flexible inputs from 30,000 to 200,000 BTUH
- Instant ON, Instant OFF operation
- Reach full intensity temperature within 30 seconds
- No need for direct venting
- 100% safety shutoff available
- Patented ceramic burner
- Seamless no-weld construction
- Compact, modular design with no moving parts
- CSA International (AGA/CGA) Design Certified



Schaefer's 2-Stage High Intensity Gas Infra-Red Heaters

Schaefer's high intensity 2-stage heaters provide soft, comfortable heat at "Low Fire" - Instantly jump to "High Fire" output on demand.

- Dependable and versatile comfort heating.
- Operate on natural gas and propane gas (LP).
- Heat an entire building with Schaefer's 2-stage heaters or use singly for spot and area heating.
- 2-stage operation based on ambient temperature variations. Eliminate excess heat when not needed. Capable of fast recovery when temperatures fall.
- "Optimal Combustion" in both operating stages - air & gas ratios precisely matched for efficient, fuel saving operation.
- Schaefer's specially designed digital 2-stage, 24 volt thermostat results in fewer on-off cycles for improved comfort and longer heater life.
- 2-stage heaters available shown above.

Applications:

- Auditoriums
- Auto Dealerships
- Auto Service Areas
- Amphitheatres
- Airplane Hangars
- Assembly Lines
- Barns
- Check-in Stations
- Check-out Aisle
- Factories
- Gymnasiums
- Golf Driving Ranges
- Greenhouses
- Entrance Areas
- Skating Rinks
- Loading Docks
- Marine Repair & Storage
- Museums
- Repair Shops
- Tennis Courts
- Warehouses
- Zoos

Call your Schaefer dealer for pricing and more information.

Schaefer Low Intensity Gas Infra-Red Tube Heaters

Saves up to 75% in Energy Costs!

Rugged, heavy-duty construction to tackle your toughest heating challenges.

Available with 40,000 to 200,000 BTUH inputs and tube lengths from 20 to 40 feet.

Features:

- Operate on natural or propane gas
- Proven system design - over 30 years
- Aluminized titanium alloy combustion chamber
- Corrosion-resistant heat exchanger
- Flared/swaged tubes for easy installation
- Simple chain mounting
- CSA International (AGA/CGA) Design Certified
- Brite aluminum reflectors
 - 98% reflectivity
 - 91.7% reflectional efficiency (shape)
- Rotating reflector arrangements from 0° to 45°
 - Each reflector rotates independently
 - All reflectors in fixed overlapped position
 - Combination of both arrangements
- Burner fully assembled & tested - ready to hang
- Factory installed wave turbulator for high efficiency
- Safe, reliable operation
 - Durable direct spark ignition
 - 100% safety shut-off
 - Pre-purge cycle for safety
 - Three system validation lights



Options: Recessed Ceiling Kit; Side Reflector; 90° Elbows; "U"-Bends; "Y" Couplers; Inlet and Exhaust Kits; 50 Hz. for Worldwide Operation

Schaefer Compact Gas Heater

Outdoors...Indoors.

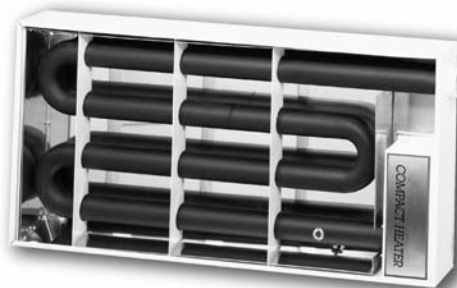
The world's only adjustable all-weather gas infra-red heater

Use Schaefer Compact Heaters outdoors. Self-contained and weather resistant.

The unique, innovative design features of the Schaefer Compact Heater make it superior to any other system for use in all types of weather. Constructed of corrosion resistant all-aluminized steel, it's direct spark ignition, and no-exposed flame ensure long-life, trouble-free operation. The optional outdoor hood kit allows full operation in unprotected outdoor environments.

Quick and easy installation in commercial, industrial & recreational buildings.

- Saves energy and lowers fuel costs up to 75%
- Adjustable BTUH inputs make it suitable for almost every industrial and commercial application.
- Recess mount the Schaefer Compact Heater in standard 2'x4' ceiling panel grids for unobtrusive operation.
- Single and multiple units can be configured to meet most heating requirements.



Applications:

- Aircraft Hangars
- Auto Dealerships
- Body Shops
- Car Washes
- Farm Buildings
- Fire Stations
- Greenhouses
- Loading Docks
- Maintenance Facilities
- Sports Facilities
- Warehouses
- Restaurant Patios
- Ski Lodges
- Hotel, Theatre & Store Entrances
- Hospitals
- Drive-Thru Services
- Bus & Smoking Shelters
- Golf Driving Ranges
- Security Booths

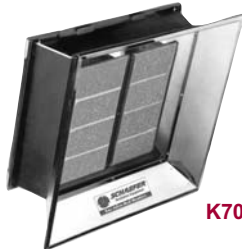
Call your Schaefer dealer for pricing and more information.

Specifications

High intensity gas infra-red ceramic heaters



K30-60



K70-100



K110-150



K160-200

Clearance to Combustibles

| BTUH Rating | 30-60,000 | 70-100,000 | 110-150,000 | 160-200,000 |
|--------------------------------------|----------------------------------|----------------------------------|----------------------------------|----------------------------------|
| Side of Heater | 30" | 36" | 46" | 48" |
| Back of Heater | 30" | 30" | 33" | 33" |
| Top of Heater | | | | |
| Mounted 0°-29° ¹ | 30" | 36" | 46" | 68" |
| Mounted 30° Only | 48" | 50" | 58" | 68" |
| W/Heat Shield 0°-29° ¹ | 34" | 38" | N/A | N/A |
| W/Heat Shield 30° Only | 34" | 38" | N/A | N/A |
| Below Heater | | | | |
| Standard Reflector | 80" | 105" | 125" | 140" |
| Parabolic Reflector | 110" | 135" | 165" | 180" |
| Overall Dimension² | | | | |
| Length | 23 ³ / ₈ " | 25 ¹ / ₄ " | 33 ⁷ / ₈ " | 33 ⁷ / ₈ " |
| Width | 16 ³ / ₈ " | 23 ³ / ₈ " | 23 ³ / ₈ " | 28 ⁵ / ₈ " |
| Depth | 8 ³ / ₄ " | 8 ³ / ₄ " | 8 ³ / ₄ " | 8 ³ / ₄ " |
| Mounting Hole Dimensions: | | | | |
| Size - Diameter | 3/8" | 3/8" | 3/8" | 3/8" |
| Radiating Surface: | 173 sq." | 346 sq." | 519 sq." | 519 sq." |
| Shipping Weight Lbs. | 30 | 36 | 49 | 49 |

¹ Models K-70 through K-100 and K-160 mounted 5 to 29° only.

² All control options may be actuated by either a thermostat or ON/OFF switch with the exception of control suffix letters RC-N and RC-L which are pull chain operated.

³ NOTE: Controls extend beyond reflector. For models K110-150 add 5.00" to the overall length. For all other models K30-60 and K70-100 add 5.00" overall to the length.

Control Options

- 10 control options
- 100% safety shut-off available
- 25V, 120V; millivolt; or pull chain operated
- Direct spark; glow coil; or manual ignition
- Field adjustable pilot gas regulator
- Concealed pilot is protected from drafts

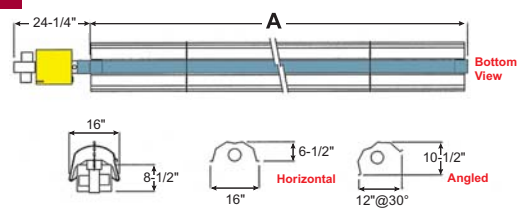
Accessories

- Protective screens
- Secondary re-radiating wire grid
- Parabolic reflector available extensions
- Heat shield available K-30 thru K-100 for decreased clearances to combustibles.

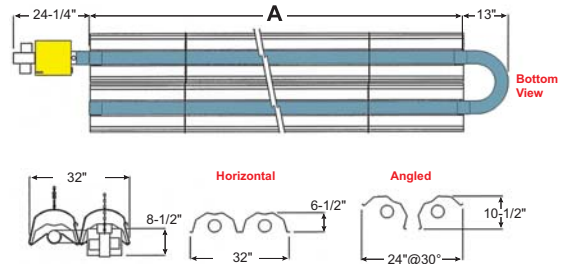
Accessories and hanging/mounting hardware is available.

Low intensity gas infra-red tube heaters

STRAIGHT



U-BEND



Clearance to Combustibles

| BTUH Input Nat. or LP | 75,000 | 100,000 | 150,000 | 200,000 |
|-------------------------------------|--------|---------|---------|---------|
| Available tube length (feet) | 20' | 30' | 40' | 70' |
| Clearances* (inches) | | | | |
| Top of Reflector | 12" | 12" | 12" | 12" |
| Front of Reflector | | | | |
| Mounted 0 | 24" | 24" | 48" | 68" |
| Mounted 1 to 30 | 24" | 24" | 48" | 68" |
| Mounted 31 to 45 | - | - | 70" | 90" |
| Rear of Reflector | | | | |
| Mounted 0 | 24" | 24" | 48" | 68" |
| Mounted 1 to 30 | 24" | 24" | 48" | 68" |
| Mounted 31 to 45 | - | - | 12" | 12" |
| Below Reflector | 60" | 60" | 82" | 102" |

*For all systems: 12" from burner end.

System Information

Manifold Operating Pressure

Natural Gas & LP/Propane:
40-100 MBTUH 3.5" WC
105-200 MBTUH 5" WC

Minimum Inlet Pressure

Natural Gas:
40-125 MBTUH 6" WC
130-200 MBTUH 7" WC

LP/Propane:

All MBTUH 11" WC

1/2" FPT Gas Inlet

Electrical Rating:

120 VAC-60 Hz-1 Phase

For specifications on models shown but not listed, contact your Schaefer dealer for more information.



PO Box 460, Sauk Rapids, MN 56379
1-800-779-3267 • Fax: (320) 251-2922
sales@schaeferfan.com
www.schaeferfan.com